

# Product information Mirona Fit-TP B LED10000-840 ETDD

## TOC: 6820951



### Luminaire type

Robust LED highbay luminaire.

### Applications

High rooms, Halls, Warehouses, Manufacturing halls, Trade fair and exhibition halls, Heavy industry. For damp rooms and canopied outdoor areas. The version Mirona Fit-SPO... is ball-proof and suitable for use in sports halls. Compliant to DIN 10500. The luminaires are suitable for applications in IFS Version 6 and/or BRC Global Standard Food Version 7-certified companies in the food and beverage industries. Suitable for use in rooms with increased risk of fire.

### Mounting methods

Suitable for ceiling and suspended mounting with optional accessories.

### Optical system

Optical system consists of a PC lens optic. With symmetric wide light intensity distribution. Direct glare limitation in accordance with UGR < 25.

### LED system

LED system consists of 2 LED modules mounted to aluminium support. Luminaire luminous flux 9700 lm, connected load 68 W, luminous efficiency of luminaire 143 lm/W. Light colour neutral white, colour temperature 4000 K, colour rendering index Ra > 80. Service life L80(t<sub>q</sub> 70 °C) = 50,000 h.

### Luminaire body

Robust diecast aluminium body with integrated cooling ribs. Colour white. Dimensions (L x W): 320 mm x 342 mm, luminaire height 63 mm. Permissible ambient temperature (ta): -30 °C - +70 °C.

### Electrical connection

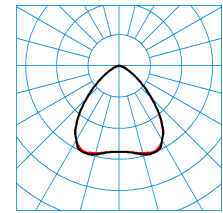
With connection cable, 1500 mm.

### Electrical version

With electronic transformer, digitally dimmable (DALI).

### Specification text

Robust LED highbay luminaire. Compliant to DIN 10500. The luminaires are suitable for applications in IFS Version 6 and/or BRC Global Standard Food Version 7-certified companies in the food and beverage industries. Suitable for use in rooms with increased risk of fire. Suitable for ceiling and suspended mounting with optional accessories. Optical system consists of a PC lens optic. With symmetric wide light intensity distribution. Direct glare limitation in accordance with UGR < 25. LED system consists of 2 LED modules mounted to aluminium support. Luminaire luminous flux 9700 lm, connected load 68 W, luminous efficiency of luminaire 143 lm/W. Light colour neutral white, colour temperature 4000 K, colour rendering index Ra > 80. Service life L80(t<sub>q</sub> 70 °C) = 50,000 h. Robust diecast aluminium body with integrated cooling ribs. Colour white. Dimensions (L x W): 320 mm x 342 mm, luminaire height 63 mm. Permissible ambient temperature (ta): -30 °C - +70 °C. Safety class I, protection rating IP65, impact resistance IK08/5 J, glow wire resistance 850 °C. With connection cable, 1500 mm. With electronic transformer, digitally dimmable (DALI).

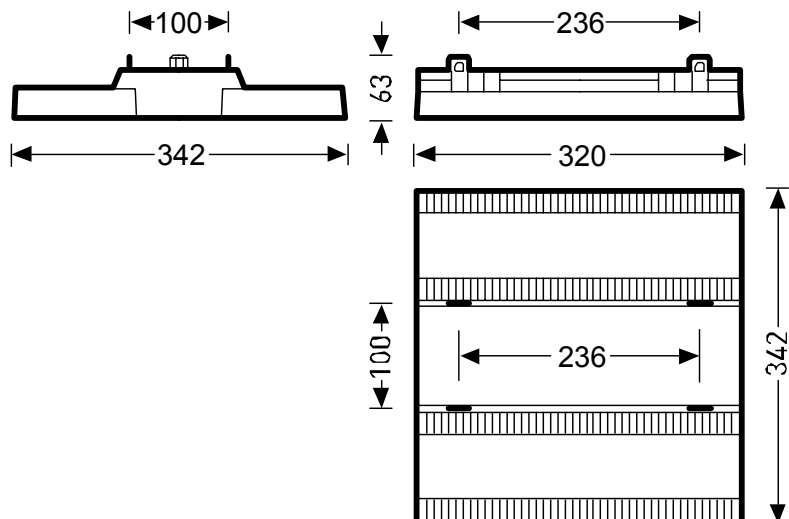


file TX050480  
UGR I = 23.5  
UGR q = 22.9  
LFEC = F0

— c0-c180  
— c90-c270



Colour	white ( ...01)
Weight	3.8 kg
Safety class	I
Hot wire test	850 °C
Impact resistance	5 J
Degree of protection	IP65
LFEC	F0
Cibse	BZ 1
LOR	1,00



### available accessories

TOC:	article
6888200	Mirona Fit AKY K
6887900	Mirona Fit AMB/13000/26000
6888100	Mirona Fit AWB/13000/26000
6888300	Mirona Fit DSY K
6888400	Mirona Fit ZDP