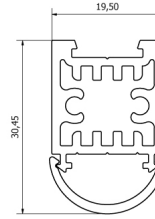
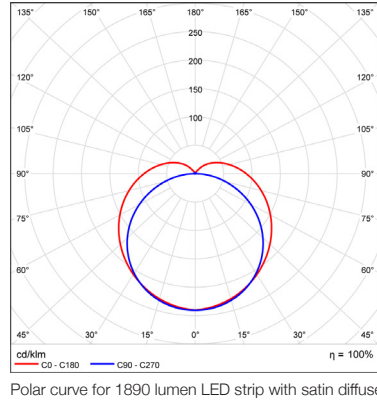
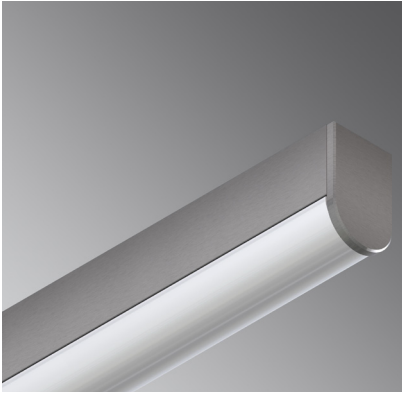


# SIDEWAYS SALLY 20C



The Sideways Sally 20C extrusion is a compact uplight/downlight solution providing powerful LED lighting. A versatile system suitable for various mounting options, Sideways Sally 20C can be surface mounted, wall mounted and suspended. The concealed mounting clip provides a quick and secure fixing to joinery. Both wire and rod suspension options are available for the Sideways Sally 20C extrusion.

## TECHNICAL DATA

|                     |   |                  |  |                     |   |
|---------------------|---|------------------|--|---------------------|---|
| <b>APPLICATIONS</b> | Task lighting over kitchen islands or reception counters, mirror lighting | <b>MATERIALS</b> | Extruded aluminium body   PMMA diffuser   aluminium end caps | <b>LIGHT SOURCE</b> | LED ribbon strip  |
| <b>INSTALLATION</b> | Interior   Exterior (with IP65 LED strip)                                 | <b>FINISH</b>    | Natural silver anodised or custom powder coat                | <b>POWER SUPPLY</b> | 24V DC - remote driver options ranging from 6 W up to 320 W |
| <b>MOUNTING</b>     | Surface-mounted<br>Rod suspended<br>Wire suspended<br>Wall mounted        |                  |  | <b>DIMMABLE</b>     | Various options available, please enquire.                  |

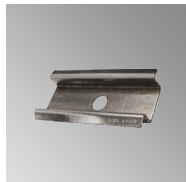
## FEATURES

- Indirect | direct option
- Dot-free and uniform lighting
- Unique mounting clip design for easy installation
- V-groove for accurate drilling and strip alignment
- PMMA diffuser - scratch and mark resistant
- Max. 14 W upward, 20 W downward
- This product is not suitable for IP 65 LED strip

## ACCESSORIES



EC-SS20-SA-C  
End cap



CFS-12  
Mounting clip



JN-ST-12  
Straight joiner



JN-90-12  
90 degree joiner



CB-60-R-S |  
CB-60-R-W  
Cable base 60, recessed



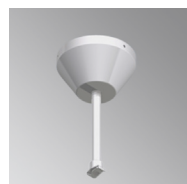
CB-80-SM-S |  
CB-80-SM-W  
Cable base 80,  
surface-mounted



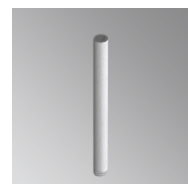
SWK-1-2M | SWK-1-4M  
Wire suspension



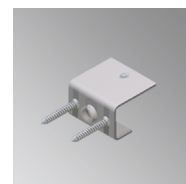
SRK-1-S | SRK-1-W  
Rod suspension kit  
(Rod not included)



SRK-6-S | SRK-6-W  
Rod suspension kit  
(Rod not included)



ROD-0.5M | ROD-1M  
| ROD-2M  
Suspension rod -  
0.5m | 1m | 2m



WB-SS20  
Wall bracket