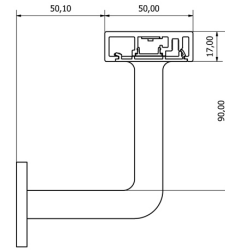
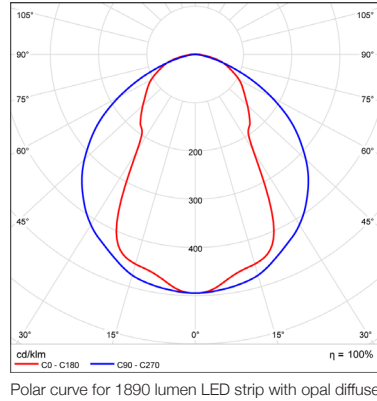
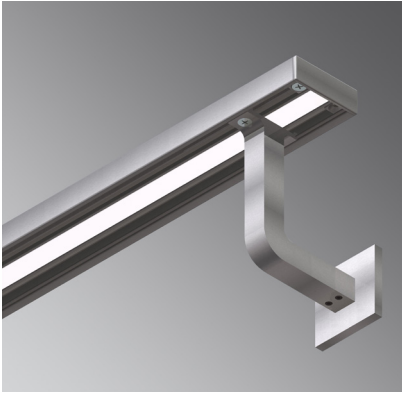


RICHIE RAIL 17



Richie Rail 17 is a unique illuminated handrail system. CNC machined wall brackets provide a beautiful finish and make for quick installation. Hollow wall brackets conceal the power supply to the LED strip, and the low voltage input makes the handrail safe to touch. Richie Rail 17 is suitable for use on residential and commercial stairs and thoroughfares.

TECHNICAL DATA

APPLICATIONS	Residential or commercial stairs, lift cars, accessways	MATERIALS	Extruded aluminium body and components polycarbonate diffuser	LIGHT SOURCE	LED ribbon strip
INSTALLATION	Interior Exterior (with IP65 LED strip)	FINISH	Natural silver anodised	POWER SUPPLY	24V DC - remote driver options ranging from 6 W up to 320 W
MOUNTING	Wall-mounted			DIMMABLE	Various options available, please enquire.

FEATURES

- Unique illuminated handrail system
- Wall mounting bracket design for easy installation
- Polycarbonate diffuser - UV resistant
- Max. 18 W per metre
- IP 65 20 W strip not feasible

ACCESSORIES



EC-RR17-MSA
End cap



WBRR17-H-MSA-S
Wall bracket with square cover



WBRR17-H-MSA-R
Wall bracket with round cover



JN-ST-RR17
Straight joiner



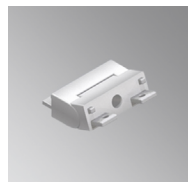
WBPBS-10
Wall bracket plasterboard spacer, 10mm



WBPBS-13
Wall bracket plasterboard spacer, 13mm



JN-90-RR17
90 degree bend



JN-V-RR17
Variable bend