

Product information SFlow D2-L MRW LED4000-830 ET 01

TOC: 6896440



Luminaire type

Surface-mounted LED luminaire for single use or trunking applications.

Applications

For the innovative lighting of meeting zones, corridors, prestigious ancillary areas and in the health sector.

Mounting methods

For wall or ceiling mounting indoors.

Optical system

Optical system with micro reflector technology (MRW) with highly efficient reflector chambers of white polished plastic for high light comfort and efficiency. With additional clear cover integrated in the optical system, flush fits on the room side and protects the LEDs. Discreet lateral light emission over the complete luminaire length. With symmetric wide light intensity distribution.

LED system

LED system and luminaire optic are clicked without tools into the luminaire body as a single assembly. Assembly is protected from falling down during mounting with a steel cord. Luminaire luminous flux 3800 lm, connected load 28 W, luminous efficiency of luminaire 136 lm/W. Light colour warm white, colour temperature 3000 K, colour rendering index Ra > 80. Service life L80(t_q 25 °C) = 50,000 h.

Luminaire body

Luminaire body of sheet steel, powder-coated white. Dimensions (L x W): 1413 mm x 84 mm, luminaire height 45 mm. Permissible ambient temperature (ta): -20 °C - +25 °C.

Electrical connection

Connection on mains side is via plug-in terminals. Independent electrical connection of assemblies.

Electrical version

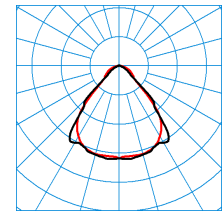
With electronic transformer, switchable.

Accessories

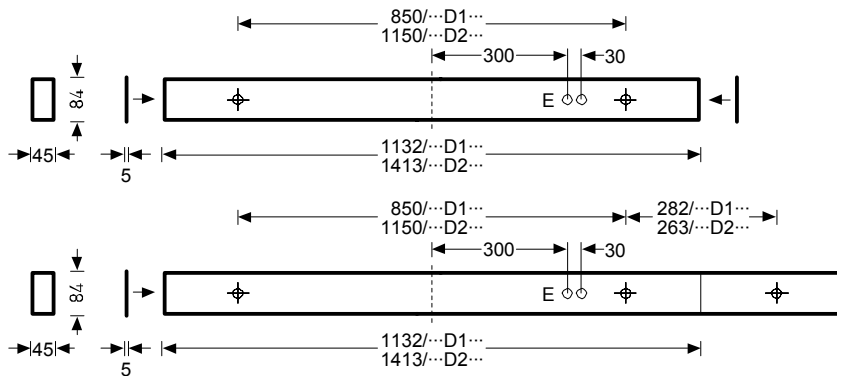
Connection cables, end caps, continuous line couplings, wire suspensions and ceiling rose must be ordered separately.

Specification text

Surface-mounted LED luminaire for single use or trunking applications. For wall or ceiling mounting indoors. Optical system with micro reflector technology (MRW) with highly efficient reflector chambers of white polished plastic for high light comfort and efficiency. With additional clear cover integrated in the optical system, flush fits on the room side and protects the LEDs. Discreet lateral light emission over the complete luminaire length. With symmetric wide light intensity distribution. LED system and luminaire optic are clicked without tools into the luminaire body as a single assembly. Assembly is protected from falling down during mounting with a steel cord. Luminaire luminous flux 3800 lm, connected load 28 W, luminous efficiency of luminaire 136 lm/W. Light colour warm white, colour temperature 3000 K, colour rendering index Ra > 80. Service life L80(t_q 25 °C) = 50,000 h. Luminaire body of sheet steel, powder-coated white. Dimensions (L x W): 1413 mm x 84 mm, luminaire height 45 mm. Permissible ambient temperature (ta): -20 °C - +25 °C. Safety class I, protection rating IP20, impact resistance IK02/0,2 J, glow wire resistance 650 °C. Connection on mains side is via plug-in terminals. Independent electrical connection of assemblies. With electronic transformer, switchable.



Colour	white (...01)
Weight	4.0 kg
Safety class	I
Hot wire test	650 °C
Impact resistance	0,2 J
Degree of protection	IP20
LFEC	F0
Cibse	BZ 1
LOR	1,00



available accessories

TOC:	article
2926500	03630S Sauger
2196600	07690TL Leuchtenraglasche
6892600	SFlow C/D ZLK
6892300	SFlow D/H ZKS 01
6892200	SFlow H ZLK
6921000	SFlow H ZZT direkt 315/1000
6921100	SFlow H ZZT direkt 315/2000
6922100	SFlow H ZZT Direkt 715/1000
6922200	SFlow H ZZT Direkt 715/2000
6817200	SFlow ZBP L2
6822800	SFlow ZDV 315 L2
4691700	ZAE/01 515
4691800	ZAE/03 515
5638900	ZS1P 2000 Seilaufhängung