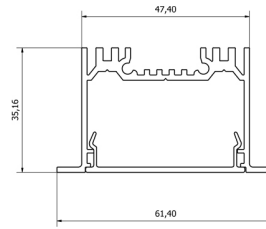
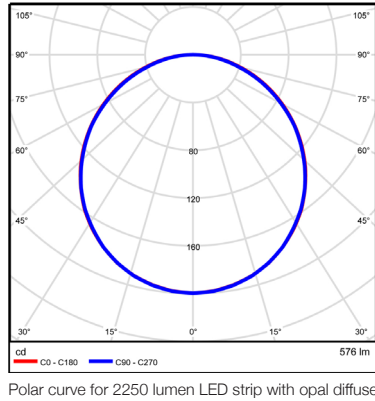
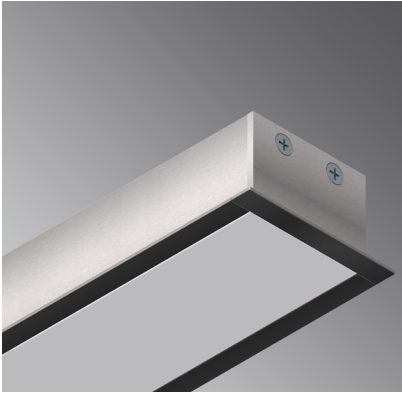


DOWNHILL DAN 35



Downhill Dan 35 is a quick-to-install, recessed down-lighter profile. The asymmetric mounting bracket makes this product unique and means that it can be installed with the LED strip already attached. Downhill Dan 35 has plenty of power for a huge range of applications. Silver anodised or white powder coat are standard finish options.

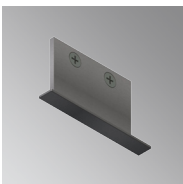
TECHNICAL DATA

APPLICATIONS	General downlighting in kitchens, living rooms, dining rooms, reception counters, lobbies	MOUNTING	Recessed	LIGHT SOURCE	LED ribbon strip
INSTALLATION	Interior Exterior (with IP65 LED strip)	MATERIALS	Extruded aluminium body PMMA diffuser aluminium end caps	POWER SUPPLY	24V DC - remote driver options ranging from 6 W up to 320 W
		FINISH	Natural silver anodised or custom powder coat	DIMMABLE	Various options available, please enquire.

FEATURES

- Dot-free and uniform lighting
- Unique mounting bracket design for easy installation
- V-groove for accurate drilling and strip alignment
- PMMA diffuser - scratch and mark resistant
- Max. 30 W per metre

ACCESSORIES



EC-DD35-SA
End cap



JN-ST-23
Straight joiner



JN-90-23
90 degree joiner



MB-DD35
Mounting bracket



SMRB
Seismic restraint bracket