

# Product information SFlow-Act D2-L MRWD LED4000 ETDD 01

## TOC: 6977751



### Luminaire type

Surface-mounted LED luminaire for single use or trunking applications. Luminaire with Activ equipment for controlling light colour via separate control unit.

### Applications

For the innovative lighting of meeting zones, corridors, prestigious ancillary areas and in the health sector.

### Mounting methods

For wall or ceiling mounting indoors.

### Optical system

Optical system with micro-reflector technology (MRWD) and highly efficient, white-polished plastic reflector chambers with diffuser cover for uniform illumination and maximum visual comfort. With additional clear cover integrated in the optical system, flush fits on the room side and protects the LEDs. Discreet lateral light emission over the complete luminaire length. With symmetric wide light intensity distribution.

### LED system

Luminaire luminous flux 4200 lm, connected load 33 W, luminous efficiency of luminaire 127 lm/W. Light colour variable (warm white - daylight white), colour temperature variable (2700 K - 6500 K), colour rendering index Ra > 80.

### Luminaire body

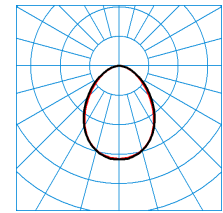
Luminaire body of sheet steel, powder-coated white. Dimensions (L x W): 1413 mm x 84 mm, luminaire height 45 mm.

### Electrical version

With electronic transformer, digitally dimmable (DALI).

### Specification text

Surface-mounted LED luminaire for single use or trunking applications. Luminaire with Activ equipment for controlling light colour via separate control unit. For wall or ceiling mounting indoors. Optical system with micro-reflector technology (MRWD) and highly efficient, white-polished plastic reflector chambers with diffuser cover for uniform illumination and maximum visual comfort. With additional clear cover integrated in the optical system, flush fits on the room side and protects the LEDs. Discreet lateral light emission over the complete luminaire length. With symmetric wide light intensity distribution. Luminaire luminous flux 4200 lm, connected load 33 W, luminous efficiency of luminaire 127 lm/W. Light colour variable (warm white - daylight white), colour temperature variable (2700 K - 6500 K), colour rendering index Ra > 80. Luminaire body of sheet steel, powder-coated white. Dimensions (L x W): 1413 mm x 84 mm, luminaire height 45 mm. Safety class I, protection rating IP20, impact resistance IK02/0,2 J, glow wire resistance 650 °C. With electronic transformer, digitally dimmable (DALI).

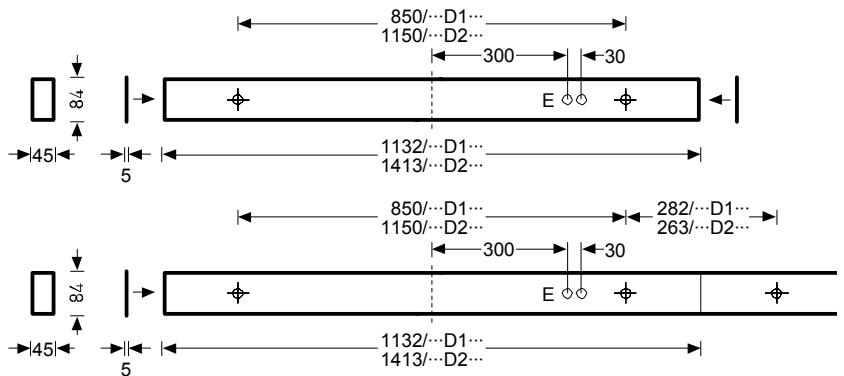


file TX054308  
UGR I = 22.3  
UGR q = 22.5  
LFEC = F0

— c0-c180  
— c90-c270



Colour	<b>white ( ...01)</b>
Weight	<b>4.195 kg</b>
Safety class	<b>I</b>
Hot wire test	<b>650 °C</b>
Impact resistance	<b>0,2 J</b>
Degree of protection	<b>IP20</b>
LFEC	<b>F0</b>
Cibse	<b>BZ 2/..75/BZ 3</b>
LOR	<b>1,00</b>



### available accessories

TOC:	article
2926500	03630S Sauger
2196600	07690TL Leuchtentraglasche
6472000	LMS WW Control Panel
6472200	LMS WW DALI Interface IRD200
6892600	SFlow C/D ZLK
6892300	SFlow D/H ZKS 01
6892400	SFlow D/H ZKS 03
6892200	SFlow H ZLK
6921200	SFlow H ZZT direkt 515/1000
6921300	SFlow H ZZT direkt 515/2000
6817200	SFlow ZBP L2
6822900	SFlow ZDV 515 L2
4691700	ZAE/01 515
4691800	ZAE/03 515
5638900	ZS1P 2000 Seilaufhängung