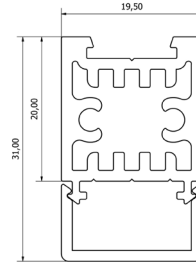
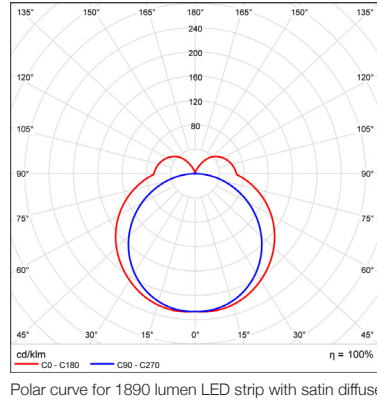
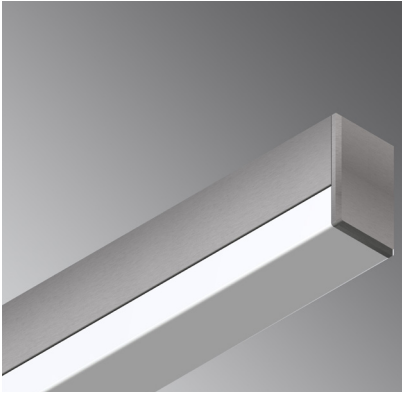


SIDEWAYS SALLY 20R



The Sideways Sally 20R extrusion is a compact uplight/downlight solution providing powerful LED lighting. A versatile system suitable for various mounting options, Sideways Sally 20R can be surface mounted, wall mounted and suspended. The concealed mounting clip provides a quick and secure fixing to joinery. Both wire and rod suspension options are available for the Sideways Sally 20R extrusion.

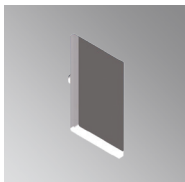
TECHNICAL DATA

| | | | | | |
|---------------------|---|------------------|--|---------------------|---|
| APPLICATIONS | Task lighting over kitchen islands or reception counters, mirror lighting | MATERIALS | Extruded aluminium body PMMA diffuser aluminium end caps | LIGHT SOURCE | LED ribbon strip |
| INSTALLATION | Interior Exterior (with IP65 LED strip) | FINISH | Natural silver anodised or custom powder coat | POWER SUPPLY | 24V DC - remote driver options ranging from 6 W up to 320 W |
| MOUNTING | Surface-mounted Rod suspended Wire suspended Wall mounted | | | DIMMABLE | Various options available, please enquire. |

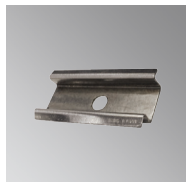
FEATURES

- Indirect | direct option
- Dot-free and uniform lighting
- Unique mounting clip design for easy installation
- V-groove for accurate drilling and strip alignment
- PMMA diffuser - scratch and mark resistant
- Max. 14 W upward, 20 W downward
- This product is not suitable for IP 65 LED strip

ACCESSORIES



EC-SS20-SA-R
End cap



CFS-12
Mounting clip



JN-ST-12
Straight joiner



JN-90-12
90 degree joiner



CB-60-R-S |
CB-60-R-W
Cable base 60, recessed



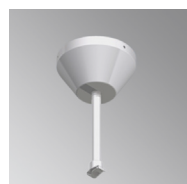
CB-80-SM-S |
CB-80-SM-W
Cable base 80,
surface-mounted



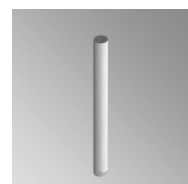
SWK-1-2M | SWK-1-4M
Wire suspension



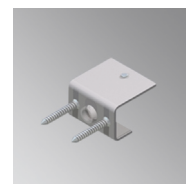
SRK-1-S | SRK-1-W
Rod suspension kit
(Rod not included)



SRK-6-S | SRK-6-W
Rod suspension kit
(Rod not included)



ROD-0.5M | ROD-1M
| ROD-2M
Suspension rod -
0.5m | 1m | 2m



WB-SS20
Wall bracket