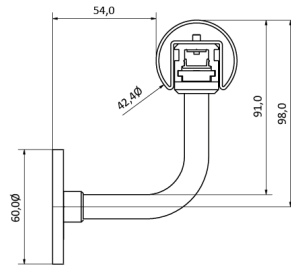


RICHIE RAIL 20



Richie Rail 20 is a unique illuminated handrail system with a diameter of 42.4mm. Hollow wall brackets conceal the power supply to the LED strip, and the low voltage input makes the handrail safe to touch. The innovative sliding wall brackets allow minimal power feeds to the LED strip for simple installation. Richie Rail 20 is suitable for use on residential and commercial stairs and thoroughfares including accessible routes and exterior urban spaces. Richie Rail 20 can be supplied as a “plug-and-play” modular system, or as a seamless, fully welded system.

TECHNICAL DATA

APPLICATIONS	Commercial stairs, public stairs, accessible routes, exterior urban spaces.	MATERIALS	316 stainless steel rail and components, extruded aluminium, polycarbonate diffuser	LIGHT SOURCE	LED ribbon strip
INSTALLATION	Interior Exterior (with IP65 LED strip)	FINISH	Satin 316 stainless steel wall bracket	POWER SUPPLY	24V DC - remote driver options ranging from 6 W up to 320 W
MOUNTING	Wall-mounted			DIMMABLE	Various options available, please enquire.

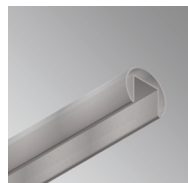
FEATURES

- Unique illuminated handrail system
- Wall mounting bracket design for easy installation
- Polycarbonate diffuser - UV resistant
- Max. 18 W per metre
- IP 65 20 W strip not feasible

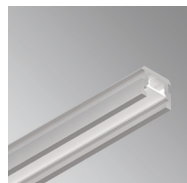
ACCESSORIES



WBRR-SS
Wall bracket



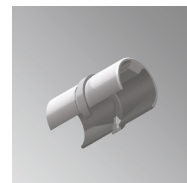
HR-RR20-SS
Handrail, 316 stainless steel



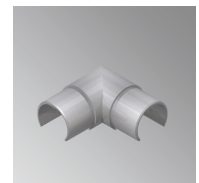
EX-RR20-MSA
Extrusion



EC-RR20-SS
Handrail end cap



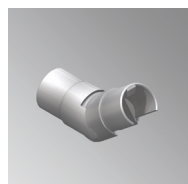
JN-ST-RR20-SS
Straight joiner



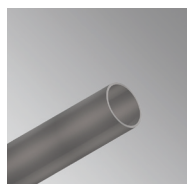
JN-90-RR20-SS
90 degree joiner



JN-VD-RR20-SS
Variable joiner, down



JN-VU-RR20-SS
Variable joiner, up



JN-TUBE-20-SS
Joiner tube, for welded systems only



JN-90-RR20-W-SS
90 degree joiner tube, for welded systems only



JN-180-RR20-W-SS
180 degree joiner tube, for welded systems only



EC-TUBE-20-SS
End cap for blank tube, for welded systems only

ACCESSORIES



PTBRR-SS
Post top bracket



PTBRR-SS-A
Adjustable post top
bracket